

## MODULE DATASHEET

### PHOTOVOLTAIC SOLUTIONS FOR COLORED FACADES

#### THE ENVELON MODULE

is a high-quality glass-glass module, frameless and without visible fastening system. The ENVELON modules are thus the solution for activated building envelopes. The modules are available in different colors and the module dimensions are adaptable. The standard format is 1590 x 710 mm<sup>2</sup> (62.6 x 28.0 in<sup>2</sup>) with a power of 195 Wp. The modules are designed and manufactured in

#### CLEAN DESIGN

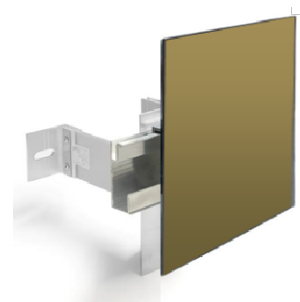
The ENVELON module is designed according to all standards of clean design. The crystalline module has a high-quality satin-finished surface with a unique uniformity. The frameless design supports this high-quality visual impression. Technical features such as bus bars are completely hidden.

#### TECHNICAL SOLUTION

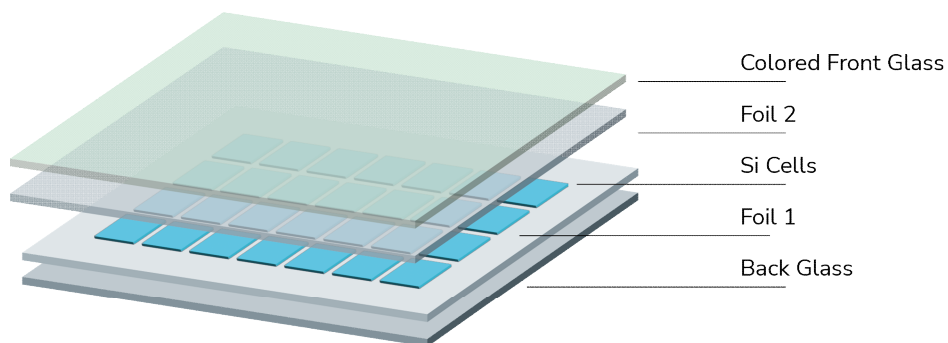
We supply not only the module, but the complete technical solution for your building. Thus, we reduce your interfaces and deliver a completely planned kit to the construction site – at a fixed price! Or we can build your façade on a turnkey basis via our network partners.



Color palette



Mounting



Structure

**Product Name**

**ON Generate – 36 – S1**

Bronze

## Electrical Properties

(measured under STC)

|                                 |  |
|---------------------------------|--|
| Cell Type                       | PERC monocrystalline                           |
| Number of Cells                 | 36   |
| Rated Power                     | 176 Wp   |
| Spec. Module Performance        | 156 Wp/m <sup>2</sup><br>14 Wp/ft <sup>2</sup> |
| Voltage MPP                     | 20.4 V   |
| Current MPP                     | 8.6 A  |
| Open Circuit Voltage            | 24.6 V   |
| Short Circuit Current           | 8.9 A  |
| Temperature Coefficient Power   | -0.38 %/K                                      |
| Temperature Coefficient Voltage | -0.35 %/K                                      |
| Temperature Coefficient Current | +0.04 %/K                                      |
| Power Tolerance                 | ± 5 %  |

STC: Module Temperature = (25±2)°C; Irradiation = 1000 W/m<sup>2</sup>; Spectral Distribution = AM 1.5 according to IEC 60904-3

## Mechanical Properties

|                                |   |
|--------------------------------|---|
| Length x Width                 | 1590 mm x 710 mm   62.6 in x 28.0 in                          |
| Thickness Glass-Glass Laminate | 9.2 mm   0.36 in  |
| Total Construction Depth       | 27 mm   1.1 in  |
| Weight                         | 25 kg   55 lbs  |
| Junction Box Rating            | IP 67   |
| Cable Length / Cross Section   | 1200 mm / 4 mm <sup>2</sup>   47.2 in / 0.006 in <sup>2</sup> |
| Plug Type                      | MC4   |

## System Properties

|                          |        |
|--------------------------|--------|
| Maximum System Voltage   | 1000 V |
| Reverse Current Capacity | 15 A   |
| Protection Class         | II     |

## Certifications (EU | US)

|                           |                                 |
|---------------------------|---------------------------------|
| Performance Qualification | IEC 61215-2:2021   UL 61215*    |
| Safety Qualification      | IEC 61730-1/-2:2016   UL 61730* |
| Fire Protection           | DIN EN 13501-1:2019: B s1 d0    |

\* pending

Please note: metric specifications are decisive.