

MODULE DATASHEET

PHOTOVOLTAIC SOLUTIONS FOR COLORED FACADES

THE ENVELON MODULE

is a high-quality glass-glass module, frameless and without visible fastening system. The ENVELON modules are thus the solution for activated building envelopes. The modules are available in different colors and the module dimensions are adaptable. The standard format is 1590 x 710 mm². The modules are designed and manufactured in Germany.

CLEAN DESIGN

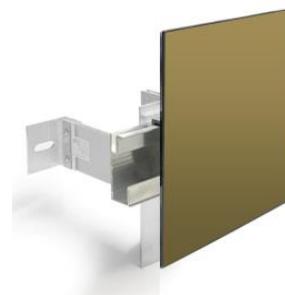
The ENVELON module is designed according to all standards of clean design. The crystalline module has a high-quality satin-finished surface with a unique uniformity. The frameless design supports this high-quality visual impression. Technical features such as bus bars are completely hidden.

TECHNICAL SOLUTION

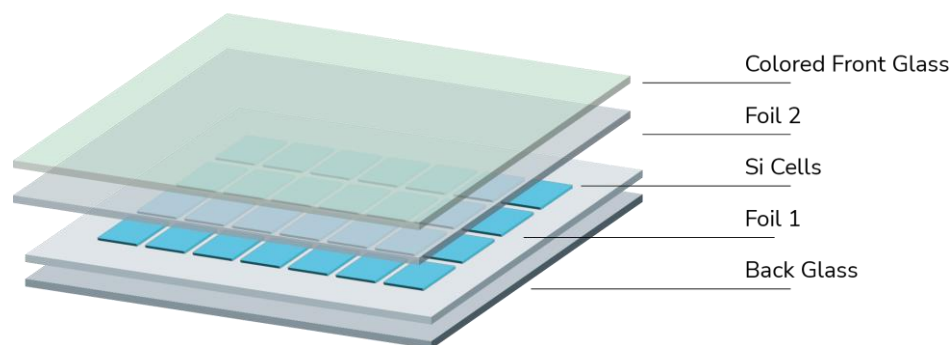
We supply not only the module, but the complete technical solution for your building. Thus, we reduce your interfaces and deliver a completely planned kit to the construction site – at a fixed price! Or we can build your façade on a turnkey basis via our network partners.



Color palette



Mounting



Structure

Anthracite

Grey

Blue

Electrical Properties

(measured under STC)

Cell Type	PERC monocrystalline		
Number of Cells	36		
Rated Power	195 Wp	175 Wp	170 Wp
Spec. Module Performance	175 Wp/m ²	155 Wp/m ²	150 Wp/m ²
	16 WP/ft ²	15 WP/ft ²	14 WP/ft ²
Voltage MPP	21,1 V		
Current MPP	9,3 A	8,4 A	8,0 A
Open Circuit Voltage	24,7 V		
Short Circuit Current	9,7 A	8,8 A	8,4 A
Temperature Coefficient Power	-0,38 %/K		
Temperature Coefficient Voltage	-0,35 %/K		
Temperature Coefficient Current	+0.04 %/K		
Power Tolerance	± 5 %		

STC: Module Temperature = 25°C; Illuminance = 1000 W/m²; Spectral Distribution = AM 1.5

Mechanical Properties

Length x Width	1590 mm x 710 mm 62,6 in x 28 in
Thickness Glass-Glass Laminate	9 mm 0,4 in
Total Construction Depth	27 mm 1,1 in
Weight	26 kg 57 lb
Junction Box Rating	IP 67
Cable Length (Cross Section)	1200 mm 47.2 in (4mm ²)
Plug Type	MC4-kompatibel

System Properties

Maximum System Voltage	1000 V
Reverse Current Capacity	15 A

Certifications (EU | US)

Performance Qualification *	IEC 61215:2022 UL 61215
Safety Qualification*	IEC 61730:2022 UL 61730
Fire Protection	DIN EN 13501-1:2019: B s1 d0

* pending

Please note: metric specifications are decisive.